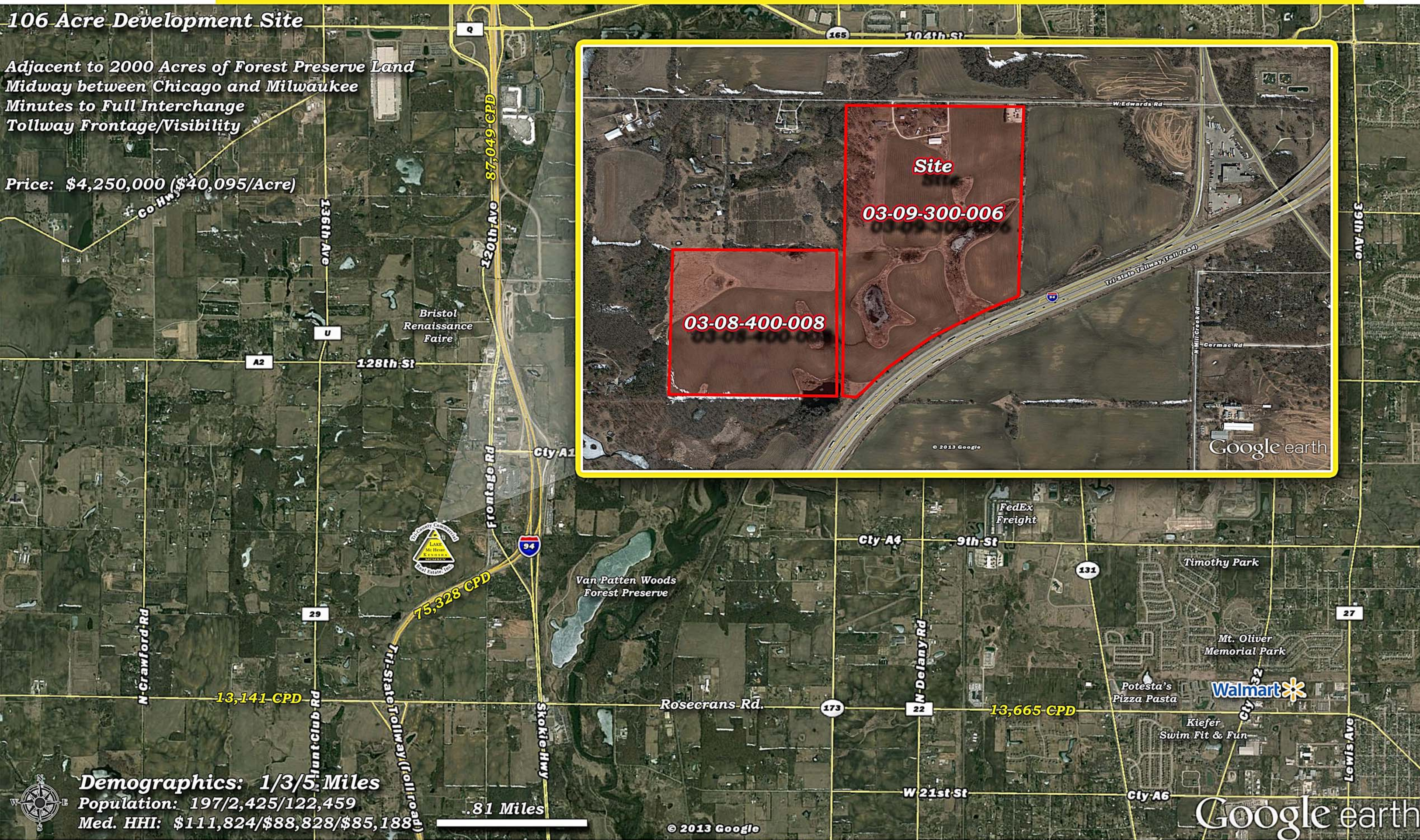




### 106 Acre Development Site

Adjacent to 2000 Acres of Forest Preserve Land  
Midway between Chicago and Milwaukee  
Minutes to Full Interchange  
Tollway Frontage/Visibility

Price: \$4,250,000 (\$40,095/Acre)



**Demographics: 1/3/5 Miles**  
Population: 197/2,425/122,459  
Med. HHI: \$111,824/\$88,828/\$85,188